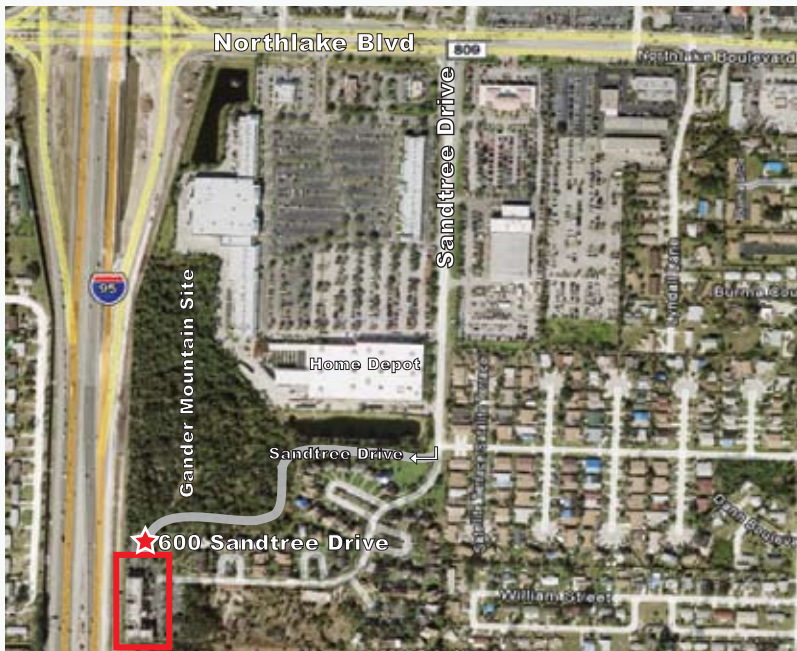


OFFICE SPACE FOR LEASE

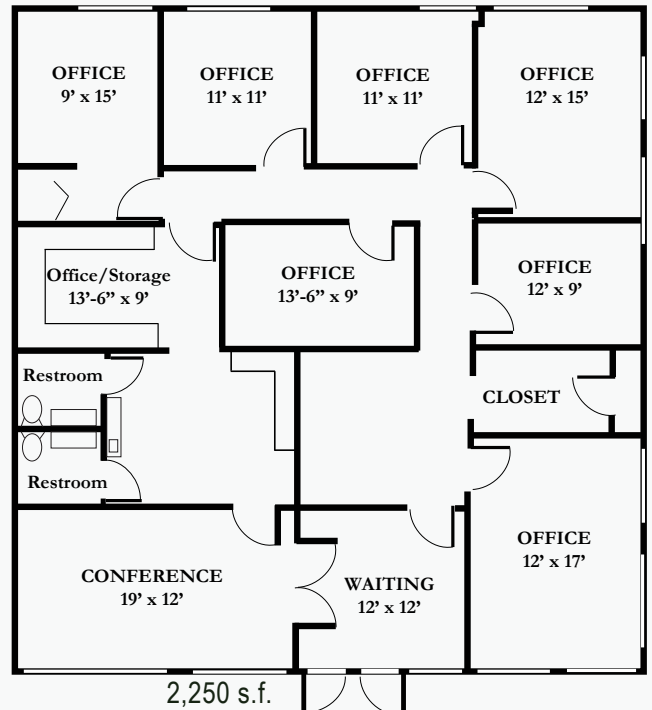
SANDTREE PLAZA



600 Sandtree Drive, Palm Beach Gardens, Florida



- ◆ Attractive Lease Terms
- ◆ IMMEDIATE OCCUPANCY
- ◆ I-95 Exposure with Signage Available
- ◆ Ample Free Parking
- ◆ Current Availabilities:
 - 2,250 s.f. - Reception, Six Window Offices, Conference Room & Kitchen (see below)
 - 475 s.f. - Reception, Two Window Offices



For More Information Contact:
(561) 624-5888

Scott Hinterleiter, Leasing Director
Licensed Real Estate Sales Associate
 shinterleiter@capitalrealtyadvisors.com

CAPITAL REALTY ADVISORS, INC.
Professional Real Estate Services

600 Sandtree Drive, Suite 109
 Palm Beach Gardens, FL 33403
 Tel: (561) 624-5888 / Fax: (561) 624-5827
 www.capitalrealtyadvisors.com

Licensed Real Estate Broker
 Commercial Property Management, Leasing & Sales
 Commercial Condominium Association Management
 Community Association Management & Accounting